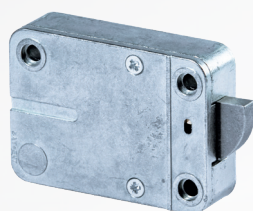




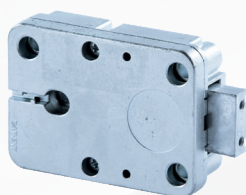
Caratteristiche

Tastiera

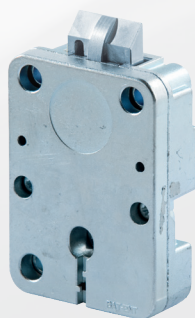
- 10 tasti alpha-numeric
- Funzione controllo tasti
- Illuminazione tastiera
- Led rosso
- Buzzer
- Vano batteria
- Lettoce chiave Dallas
- Tastiera fissa/rotante
- 4 configurazioni selezionabili da tastiera
- Alimentazione:
 - batteria alkaline 9V
 - pacco batterie
 - alimentatore



RotoBolt



StraightBolt



SpringBolt



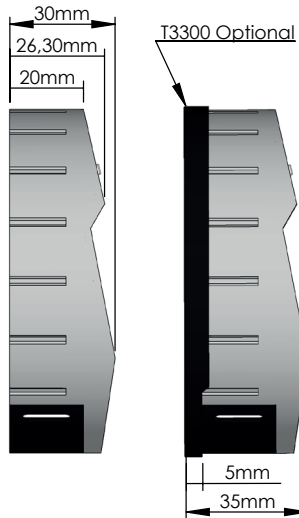
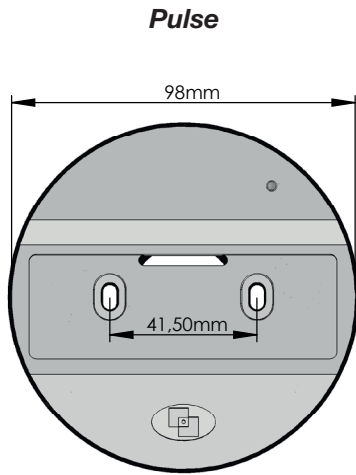
MotorLock

Serrature 2 utenti

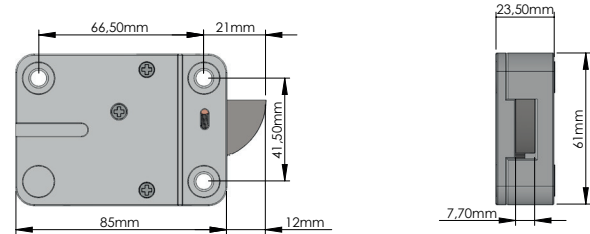
- Manager
- Utente
- Tempo di ritardo 1-99 minuti
- Finestra di apertura 1-19 minuti
- Penalità

Serrature 10 utenti

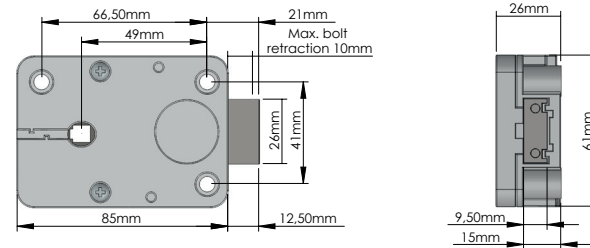
- Manager
- 8 Utenti
- Utente override
- Tempo di ritardo 1-99 minuti
- Finestra di apertura 1-19 minuti
- Allarme silenzioso
- Blocco remoto
- Penalità
- Chiavi Dallas
- Apertura congiunta



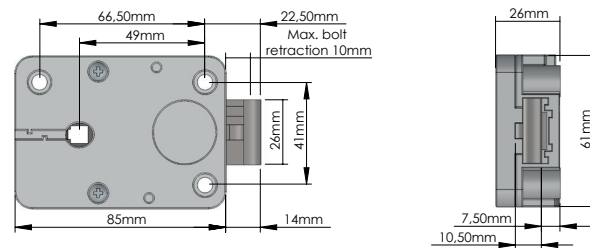
RotoBolt



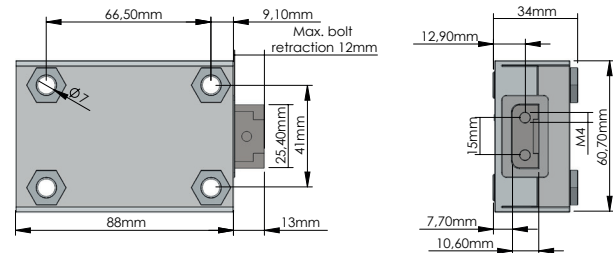
StraightBolt



SpringBolt



MotorLock



GLOBAL HEADQUARTERS

Tecnosicurezza
Via C. Battisti, 276
37057 S.Giovanni Lup.(VR)
ITALY
info@tecnosicurezza.it
www.tecnosicurezza.it

USA HEADQUARTERS

Tecnosicurezza
50, Thomas Lane
Versailles, KY 40383
USA
info@usatecno.com
www.usatecno.com

SPAIN HEADQUARTERS

Tecnosicurezza
C/Menor, 4 - Nave 10, Pol Ind. "La Mina"
28770 Colmenar Viejo
SPAIN
info@tecnosicurezza.es
www.tecnosicurezza.es